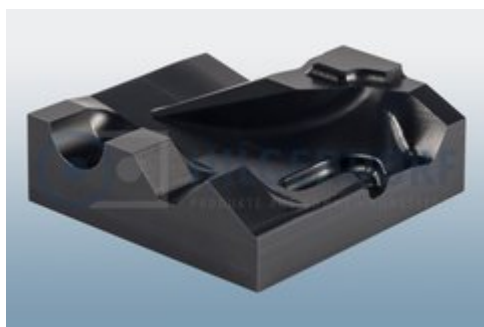
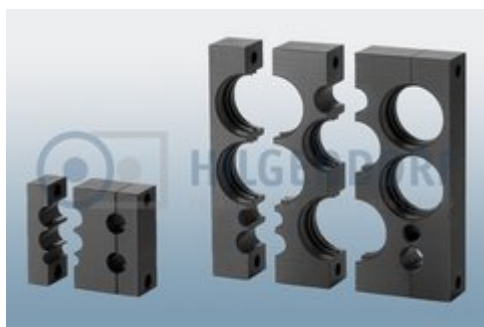
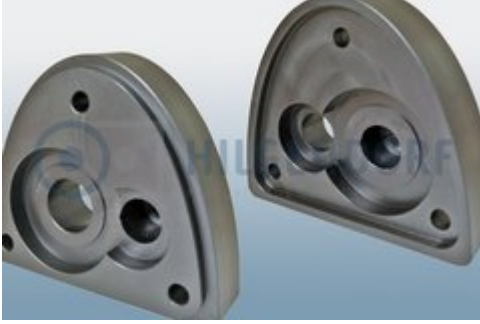




[Home](#) / [Custom-made products](#) / [Turned and milled parts of plastics](#)





For parts undergoing mechanical processing, we use a comprehensive assortment of semi-finished products made of plastic. We provide components made according to drawings, patterns or customer specifications and with various processing techniques.

These are used in the various areas of mechanical and plant engineering as well as in the automotive industry and the railway industry. Because they are light in weight, they frequently replace metal parts and are used as wear parts, protective parts and fastening parts.

We provide you with diverse solutions made of the following materials based on the required application:

PA 6, PA 6 G, PA 6.6, PA 12, POM, PE, PE 1000, PP, PPS, PVC, PC, PET, PMMA, PEEK, PVDF, PTFE, etc.

Semi-finished products in accordance with EN 45545-2:2013 and DIN 5510-2 are available for the railway industry.

© 2023 Hilgendorf GmbH + Co. KG • Benzstraße 1 • D-31135 Hildesheim

+49 (0) 5121 / 28995-0

E-Mail

Cookie-Settings

- ☒ Technically essential
- ☐ Statistical purposes (anonymised)

We use cookies on our website. Some of them are technically essential, while others enable us to provide you with a better user-experience. You can consent to the use of cookies for statistical purposes by clicking on „Agree and continue“ or adjust the settings on your own via the options above. For further information and how you can change your decision at any time, please refer to our [data privacy statement](#).

Agree and continue Accept only essential