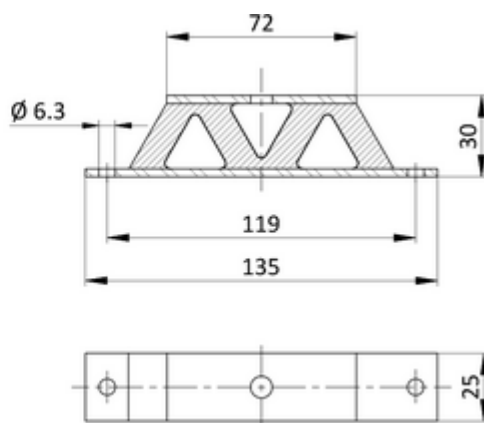
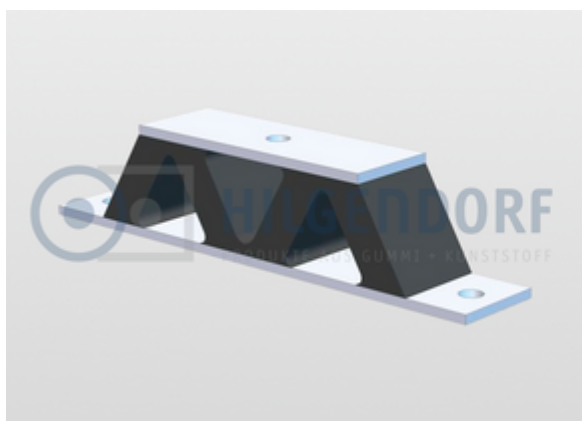




[Home](#) / [Standard products](#) / [Rubber-to-metal elements](#) / [HIL-W-element](#)

For elastic mounting of small masses with low natural frequencies

- Material natural rubber, 43°, 57° and 68° Shore A
- Load on pressure and thrust possible
- No tensile stress permissible



Art. No.	L x W x H	Rib
	[mm]	[mm]
W10	135 x 25 x 30	10
W 8	135 x 25 x 30	8

© 2023 Hilgendorf GmbH + Co. KG • Benzstraße 1 • D-31135 Hildesheim

[+49 \(0\) 5121 / 28995-0](#)

[E-Mail](#)

Cookie-Settings

- ☒ Technically essential
- ☐ Statistical purposes (anonymised)

We use cookies on our website. Some of them are technically essential, while others enable us to provide you with a better user-experience. You can consent to the use of cookies for statistical purposes by clicking on „Agree and continue“ or adjust the settings on your own via the options above. For further information and how you can change your decision at any time, please refer to our [data privacy statement](#).

Agree and continue Accept only essential