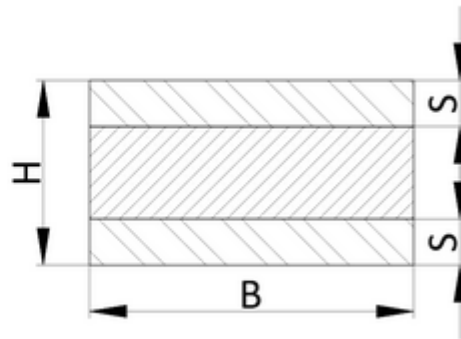
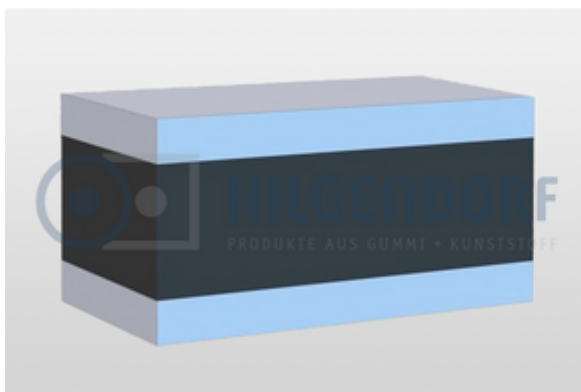




[Home](#) / [Standard products](#) / [Rubber-to-metal elements](#) / [HIL-rails, type A,B,C,D](#)

For elastic mounting of heavy machines and components

- Material natural rubber, 57 ±5 Shore A



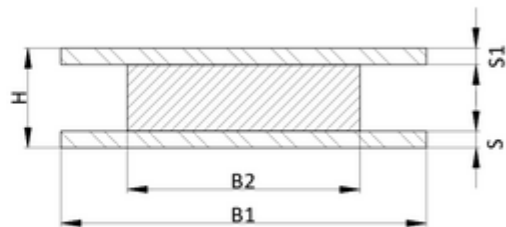
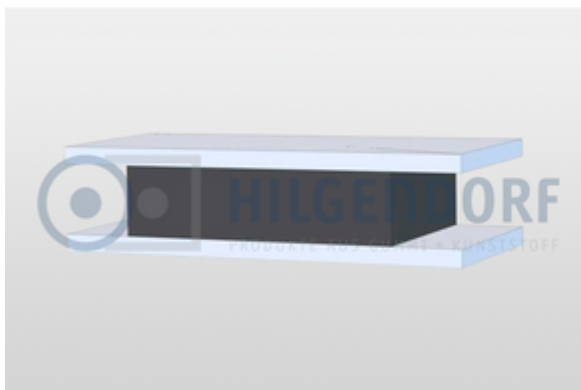
W	H,L	S	
[mm]	[mm]	[mm]	[mm]
40	20	2.000	5
40	35	2.000	10
40	40	2.000	10
40	45	2.000	10
50	20	2.000	5
50	35	2.000	10
50	40	2.000	10
50	45	2.000	10
50	50	2.000	10

W	H,L	S	
50	70	2.000	10
60	35	2.000	10
60	50	2.000	10
60	60	2.000	10
70	30	2.000	10
70	45	2.000	10
70	50	2.000	10
70	55	2.000	10
70	60	2.000	10
70	70	2.000	10
80	45	2.000	10
80	80	2.000	10
100	45	2.000	15
100	50	2.000	15
100	55	2.000	15
100	60	2.000	15
100	80	2.000	15
120	45	2.000	15
120	60	2.000	15
120	70	2.000	15
120	80	2.000	15
150	60	2.000	15
150	80	2.000	15
150	100	2.000	15

W	H,L	S	
200	70	2.000	15
200	80	2.000	15
200	100	2.000	15

For elastic mounting of heavy machines and components

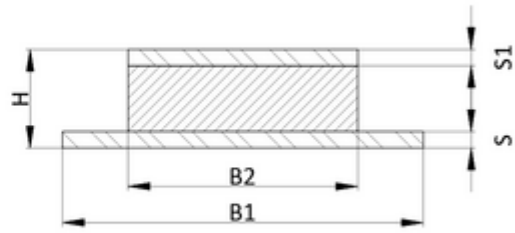
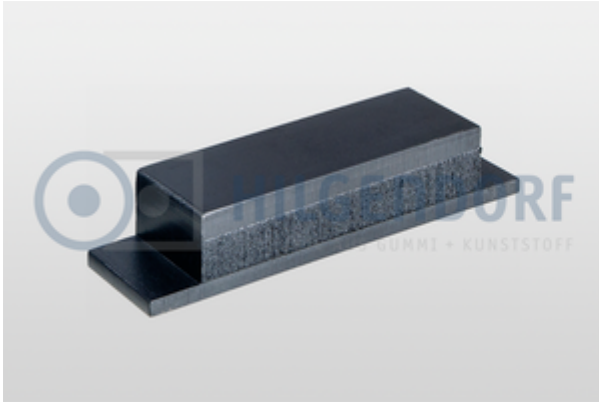
- Material natural rubber, 57 ±5 Shore A



W1	W2	H	L	S	S1
[mm]	[mm]	[mm]	[mm]	[mm]	[mm]
280	200	80	100	10	10
300	200	80	100	10	10

For elastic mounting of heavy machines and components

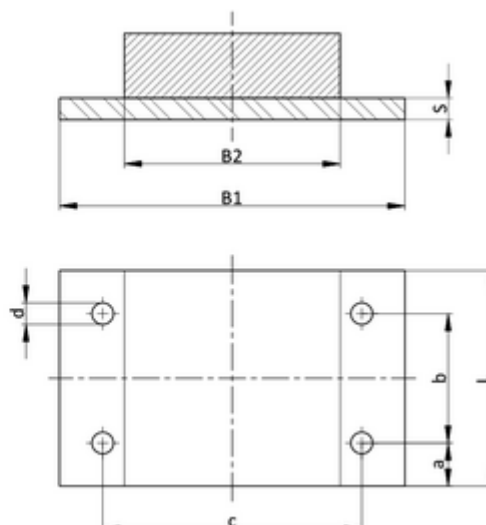
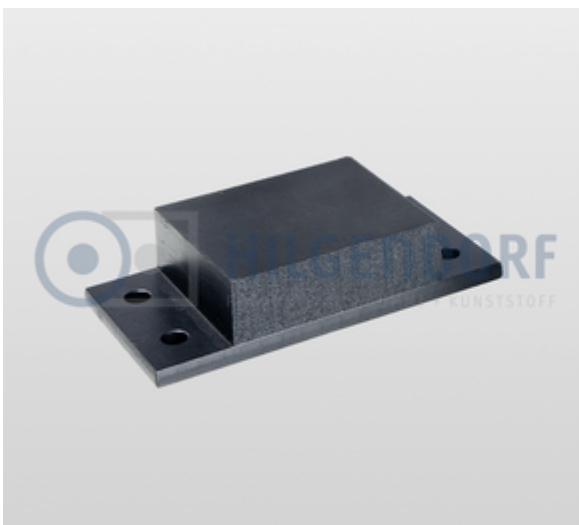
- Material natural rubber, 57 ±5 Shore A



W1	W2	H	L	S	S1
[mm]	[mm]	[mm]	[mm]	[mm]	[mm]
200	150	40	50	8	12
270	220	40	50	8	12
470	230	60	100	15	15
480	230	60	100	15	15
550	430	60	100	15	15

For elastic mounting of heavy machines and components

- Material natural rubber, 57 ± 5 Shore A



W1	W2	H	L	S	a/b/c/d
[mm]	[mm]	[mm]	[mm]	[mm]	[mm]
130	70	35	50	5	25/--/100/8,5
130	70	70	50	5	25/--/100/8,5
200	120	45	100	10	25/50/160/13
200	120	80	100	10	25/50/160/13
250	150	45	120	10	30/60/200/15
250	150	70	120	10	30/60/200/15
300	200	50	150	15	35/80/250/17
300	200	80	150	15	35/80/250/17

[PDF](#)

© 2020 Hilgendorf GmbH + Co. • Benzstraße 1 • D-31135 Hildesheim

[+49 \(0\) 5121 / 28995-0](tel:+49(0)5121289950)

[info \(at\) hilgendorf.net](mailto:info@hilgendorf.net)