

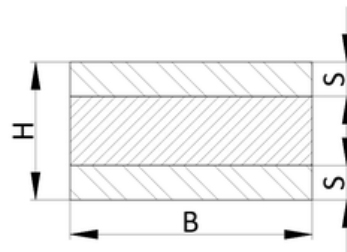
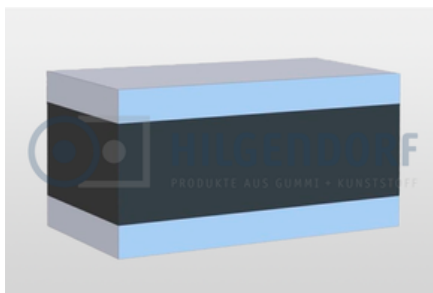


HIL-Schiene

HIL-A-Schiene

zur elastischen Lagerung schwerer Anlagen und Maschinen

- Werkstoff NK, 57° Shore A



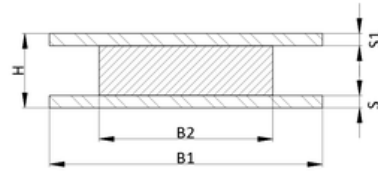
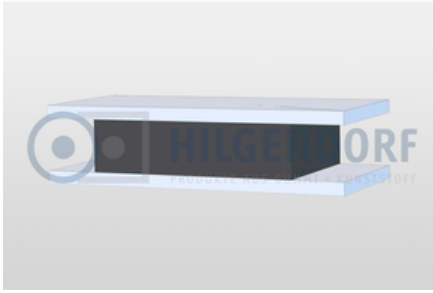
| B | H | L | S |
|----------|----------|----------|----------|
| [mm] | [mm] | [mm] | [mm] |
| 40 | 20 | 2.000 | 5 |
| 40 | 35 | 2.000 | 10 |
| 40 | 40 | 2.000 | 10 |
| 40 | 45 | 2.000 | 10 |
| 50 | 20 | 2.000 | 5 |
| 50 | 35 | 2.000 | 10 |
| 50 | 40 | 2.000 | 10 |
| 50 | 45 | 2.000 | 10 |
| 50 | 50 | 2.000 | 10 |
| 50 | 70 | 2.000 | 10 |
| 60 | 35 | 2.000 | 10 |
| 60 | 50 | 2.000 | 10 |

| B | H | L | S |
|----------|----------|----------|----------|
| 60 | 60 | 2.000 | 10 |
| 70 | 30 | 2.000 | 10 |
| 70 | 45 | 2.000 | 10 |
| 70 | 50 | 2.000 | 10 |
| 70 | 55 | 2.000 | 10 |
| 70 | 60 | 2.000 | 10 |
| 70 | 70 | 2.000 | 10 |
| 80 | 45 | 2.000 | 10 |
| 80 | 80 | 2.000 | 10 |
| 100 | 45 | 2.000 | 15 |
| 100 | 50 | 2.000 | 15 |
| 100 | 55 | 2.000 | 15 |
| 100 | 60 | 2.000 | 15 |
| 100 | 80 | 2.000 | 15 |
| 120 | 45 | 2.000 | 15 |
| 120 | 60 | 2.000 | 15 |
| 120 | 70 | 2.000 | 15 |
| 120 | 80 | 2.000 | 15 |
| 150 | 60 | 2.000 | 15 |
| 150 | 80 | 2.000 | 15 |
| 150 | 100 | 2.000 | 15 |
| 200 | 70 | 2.000 | 15 |
| 200 | 80 | 2.000 | 15 |
| 200 | 100 | 2.000 | 15 |

HIL-B-Schiene

zur elastischen Lagerung schwerer Anlagen und Maschinen

- Werkstoff NK, 57° Shore A

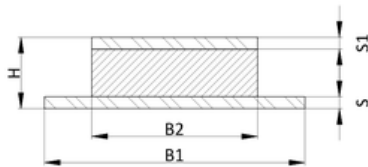
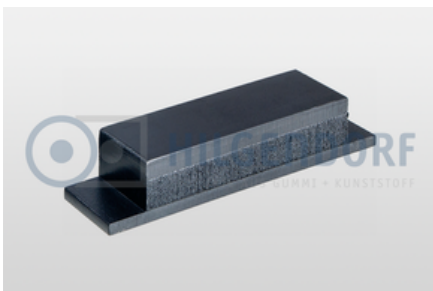


| B1 | B2 | H | L | S | S1 |
|-----------|-----------|----------|----------|----------|-----------|
| [mm] | [mm] | [mm] | [mm] | [mm] | [mm] |
| 280 | 200 | 80 | 100 | 10 | 10 |
| 300 | 200 | 80 | 100 | 10 | 10 |

HIL-C-Schiene

zur elastischen Lagerung schwerer Anlagen und Maschinen

- Werkstoff NK, 57° Shore A

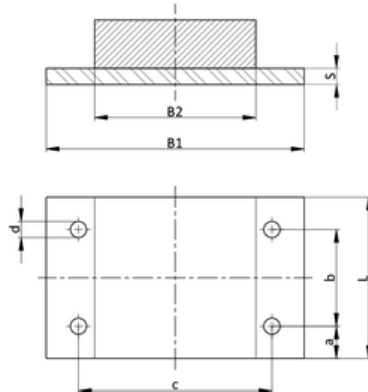
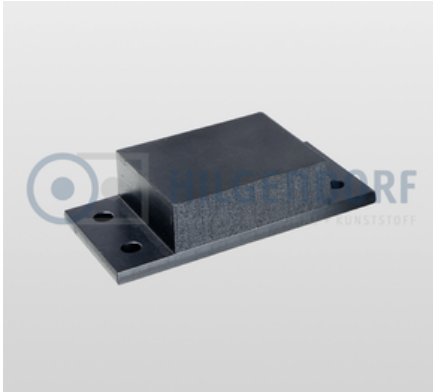


| B1 | B2 | H | L | S | S1 |
|-----------|-----------|----------|----------|----------|-----------|
| [mm] | [mm] | [mm] | [mm] | [mm] | [mm] |
| 200 | 150 | 40 | 50 | 8 | 12 |
| 270 | 220 | 40 | 50 | 8 | 12 |
| 470 | 230 | 60 | 100 | 15 | 15 |
| 480 | 230 | 60 | 100 | 15 | 15 |
| 550 | 430 | 60 | 100 | 15 | 15 |

HIL-D-Schiene

zur elastischen Lagerung schwerer Anlagen und Maschinen

- Werkstoff NK, 57° Shore A



| B1 | B2 | H | L | S | a/b/c/d |
|-----------|-----------|----------|----------|----------|----------------|
| [mm] | [mm] | [mm] | [mm] | [mm] | [mm] |
| 130 | 70 | 35 | 50 | 5 | 25/--/100/8,5 |
| 130 | 70 | 70 | 50 | 5 | 25/--/100/8,5 |
| 200 | 120 | 45 | 100 | 10 | 25/50/160/13 |
| 200 | 120 | 80 | 100 | 10 | 25/50/160/13 |
| 250 | 150 | 45 | 120 | 10 | 30/60/200/15 |
| 250 | 150 | 70 | 120 | 10 | 30/60/200/15 |
| 300 | 200 | 50 | 150 | 15 | 35/80/250/17 |
| 300 | 200 | 80 | 150 | 15 | 35/80/250/17 |

[PDF](#)

© 2018 Hilgendorf GmbH + Co. • Benzstraße 1 • D-31135 Hildesheim

+49 (0) 5121 / 28995-0

info (at) hilgendorf.net