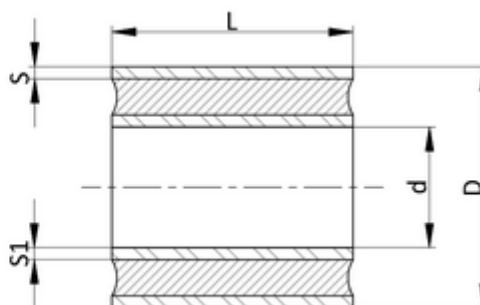




[Home](#) / [Standard products](#) / [Rubber-to-metal elements](#) / [HIL-bushing](#)

Elastic mounting for use in the construction of vehicles and machines

- Material natural rubber, 57° Shore A



Art. No.	D	d	L	L1	S	S1
	[mm]	[mm]	[mm]	[mm]	[mm]	[mm]
	45	20	30	30	2,5	3,5
0500278	52	30	45	45	2	2,5
	63	27	39,5	36,8	4	4
	65	30	70	70	2,5	3,5
	70	30	70	70	2,5	3,5
	125	70	110	120	7	7
	200	77	146	146	10	10

Cookie-Settings

- ☒ Technically essential
- ☐ Statistical purposes (anonymised)

We use cookies on our website. Some of them are technically essential, while others enable us to provide you with a better user-experience. You can consent to the use of cookies for statistical purposes by clicking on „Agree and continue“ or adjust the settings on your own via the options above. For further information and how you can change your decision at any time, please refer to our [data privacy statement](#).

Agree and continue Accept only essential